



**ANCAP Test Protocol.**  
AEB Car-to-Car Systems v3.0.2

JANUARY 2020



## PREFACE

During the test preparation, vehicle manufacturers are encouraged to liaise with ANCAP and to observe the way cars are set up for testing. Where a vehicle manufacturer feels that a particular feature should be altered, they should raise this with the ANCAP assessor present at the test, or in writing to the ANCAP Chief Executive Officer if no assessor is present. ANCAP will consider the matter and at their sole discretion and give direction to the test facility.

Vehicle manufacturers warrant not to, whether directly or indirectly, interfere with testing and are forbidden from making changes to any feature that may influence the test, including but not limited to dummy positioning, vehicle setting, laboratory environment etc.

Illustrations in this protocol are reproduced from Euro NCAP publications, and therefore show Euro NCAP markings on left-hand-drive vehicles. Where relevant, the layouts depicted should be adapted to right-hand-drive application.

VERSION	PUBLISHED	DETAILS
2.0	July 2017	First version of ANCAP protocol.
2.0.1	December 2017	Amendments to s6.1.1, 8.1.2, 8.2.4.
3.0.1	April 2019	New version of protocol for 2020, introducing junction scenarios and other changes.
3.0.2	July 2019	ECE method added to PBC Definition. Corrected references in s8.2.6.

### © COPYRIGHT ANCAP 2019

This work is the intellectual property of ANCAP with certain content reproduced with the permission of Euro NCAP. A licence is granted for this material to be shared for non-commercial, educational purposes, provided this copyright statement appears on the reproduced materials and notice is given that the copying is by permission of ANCAP. To disseminate otherwise or to republish will be considered a breach of intellectual property rights.

### DISCLAIMER.

ANCAP has taken all reasonable care to ensure that the information published in this protocol is accurate and reflects the current technical decisions taken by the organisation. In the event this protocol contains an error or inaccuracy, ANCAP reserves the right to make corrections and determine the assessment and subsequent result of the affected requirement(s).

# AUSTRALASIAN NEW CAR ASSESSMENT PROGRAM (ANCAP)

## TESTING PROTOCOL – AEB Car-to-Car Systems

### Table of Contents

1	INTRODUCTION	1
2	DEFINITIONS	1
3	REFERENCE SYSTEM	3
3.1	Convention	3
3.2	Lateral path error	4
3.3	Lateral overlap	4
4	MEASURING EQUIPMENT	5
4.2	Measurements and Variables	5
4.3	Measuring Equipment	5
4.4	Data Filtering	5
5	GLOBAL VEHICLE TARGET	6
5.1	Specification	6
6	MANUFACTURER DATA	7
6.1	Manufacturer Supplied Data	7
6.2	Absence of Manufacturer Data	8
7	TEST CONDITIONS	9
7.1	Test Track	9
7.2	Weather Conditions	10
7.3	Surroundings	10
7.4	VUT Preparation	11
8	TEST PROCEDURE	13
8.1	VUT Pre-test Conditioning	13
8.2	Test Scenarios	14
8.3	Test Conduct	17
8.4	Test Execution	18
ANNEX A	BRAKE APPLICATION PROCEDURE	20
ANNEX B	Emergency Steering Support	23

## 1 INTRODUCTION

This protocol specifies the AEB Car-to-Car test procedures, which are part of the Safety Assist assessment. To be eligible to score points for AEB CCRs (10-50km/h), a good Whiplash score must be achieved for the front seat.

For AEB Car-to-Car, the system is tested in three scenarios (CCRs, CCRm and CCRb). For this type of AEB system, both the AEB and FCW functionality is assessed. The turn-across-path scenario (CCFtap) is only assessed for AEB performance.

## 2 DEFINITIONS

Throughout this protocol the following terms are used:

**Peak Braking Coefficient (PBC)** – the measure of tyre to road surface friction based on the maximum deceleration of a rolling tyre, measured using the American Society for Testing and Materials (ASTM) E1136-10 (2010) standard reference test tyre, in accordance with ASTM Method E 1337-90 (reapproved 1996), at a speed of 64.4km/h, without water delivery. Alternatively, the method as specified in UNECE R13-H.

**Autonomous Emergency Braking (AEB)** – braking that is applied automatically by the vehicle in response to the detection of a likely collision to reduce the vehicle speed and potentially avoid the collision.

**Forward Collision Warning (FCW)** – an audio-visual warning that is provided automatically by the vehicle in response to the detection of a likely collision to alert the driver.

**Dynamic Brake Support (DBS)** – a system that further amplifies the driver braking demand in response to the detection of a likely collision to achieve a greater deceleration than would otherwise be achieved for the braking demand in normal driving conditions.

**Autonomous Emergency Steering (AES)** – steering that is applied automatically by the vehicle in response to the detection of a likely collision to steer the vehicle around the vehicle in front to avoid the collision.

**Emergency Steering Support (ESS)** – a system that supports the driver steering input in response to the detection of a likely collision to alter the vehicle path and potentially avoid a collision.

**Car-to-Car Rear Stationary (CCRs)** – a collision in which a vehicle travels forwards towards another stationary vehicle and the frontal structure of the vehicle strikes the rear structure of the other.

**Car-to-Car Rear Moving (CCRm)** – a collision in which a vehicle travels forwards towards another vehicle that is travelling at constant speed and the frontal structure of the vehicle strikes the rear structure of the other.

**Car-to-Car Rear Braking (CCRb)** – a collision in which a vehicle travels forwards towards another vehicle that is travelling at constant speed and then decelerates, and the frontal structure of the vehicle strikes the rear structure of the other.

**Car-to-Car Front Turn-Across-Path (CCFtap)** – a collision in which a vehicle turns across the path of an oncoming vehicle travelling at constant speed, and the frontal structure of the vehicle strikes the front structure of the other.

**Vehicle under test (VUT)** – means the vehicle tested according to this protocol with a pre-crash collision mitigation or avoidance system on board

**Vehicle width** – the widest point of the vehicle ignoring the rear-view mirrors, side marker lamps, tyre pressure indicators, direction indicator lamps, position lamps, flexible mud-guards and the deflected part of the tyre side-walls immediately above the point of contact with the ground.

**Global Vehicle Target (GVT)** – means the vehicle target used in this protocol as defined in Euro NCAP [TB025 - Global Vehicle Target specification for Euro NCAP v1.0](#)

**Time To Collision (TTC)** – means the remaining time before the VUT strikes the GVT, assuming that the VUT and GVT would continue to travel with the speed it is travelling.

**T<sub>AEB</sub>** – means the time where the AEB system activates. Activation time is determined by identifying the last data point where the filtered acceleration signal is below  $-1 \text{ m/s}^2$ , and then going back to the point in time where the acceleration first crossed  $-0.3 \text{ m/s}^2$

**T<sub>FCW</sub>** – means the time where the audible warning of the FCW starts. The starting point is determined by audible recognition

**V<sub>impact</sub>** – means the speed at which the VUT hits the GVT

**V<sub>rel\_impact</sub>** – means the relative speed at which the VUT hits the GVT by subtracting the velocity of the GVT from V<sub>impact</sub> at the time of collision

### 3 REFERENCE SYSTEM

#### 3.1 Convention

- 3.1.1 For both VUT and GVT use the convention specified in ISO 8855:1991 in which the x-axis points towards the front of the vehicle, the y-axis towards the left and the z-axis upwards (right hand system), with the origin at the most forward point on the centreline of the VUT for dynamic data measurements as shown in Figure 3-1.
- 3.1.2 Viewed from the origin, roll, pitch and yaw rotate clockwise around the x, y and z axes respectively. Longitudinal refers to the component of the measurement along the x-axis, lateral the component along the y-axis and vertical the component along the z-axis.
- 3.1.3 This reference system should be used for both left- and right-hand drive vehicles tested.

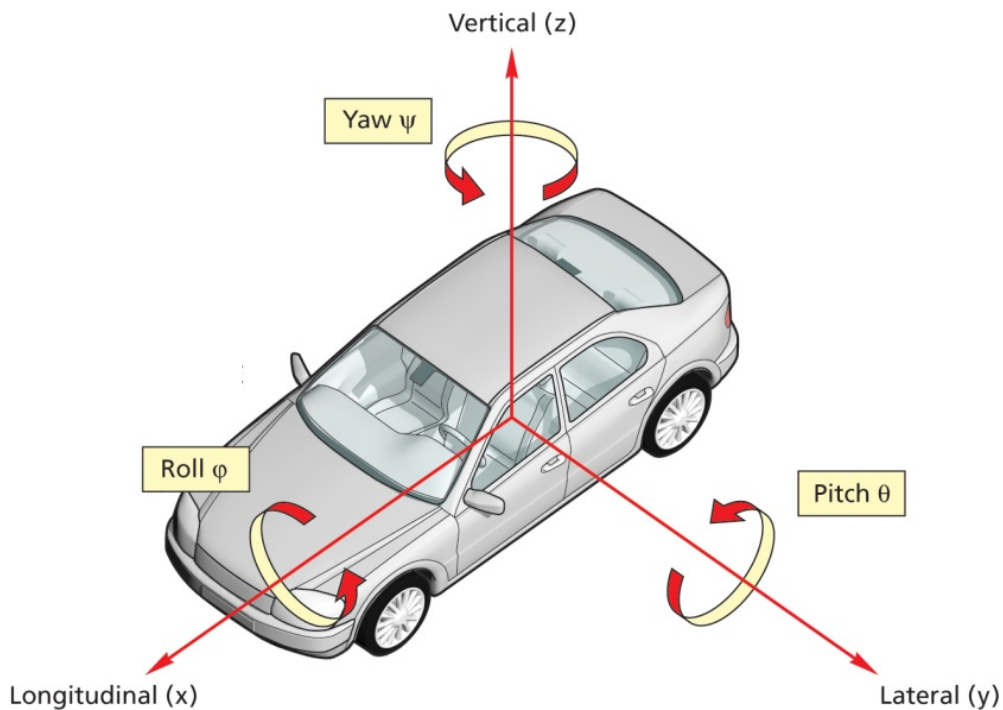


Figure 3-1: Coordinate system and notation

### 3.2 Lateral path error

3.2.1 The lateral path error is determined as the lateral distance between the centre of the front of the VUT and the centre of the rear of the GVT when measured in parallel to the intended straight-lined path as shown in the figure below.

$$\text{Lateral path error} = Y_{\text{VUT error}} + Y_{\text{GVT error}}$$

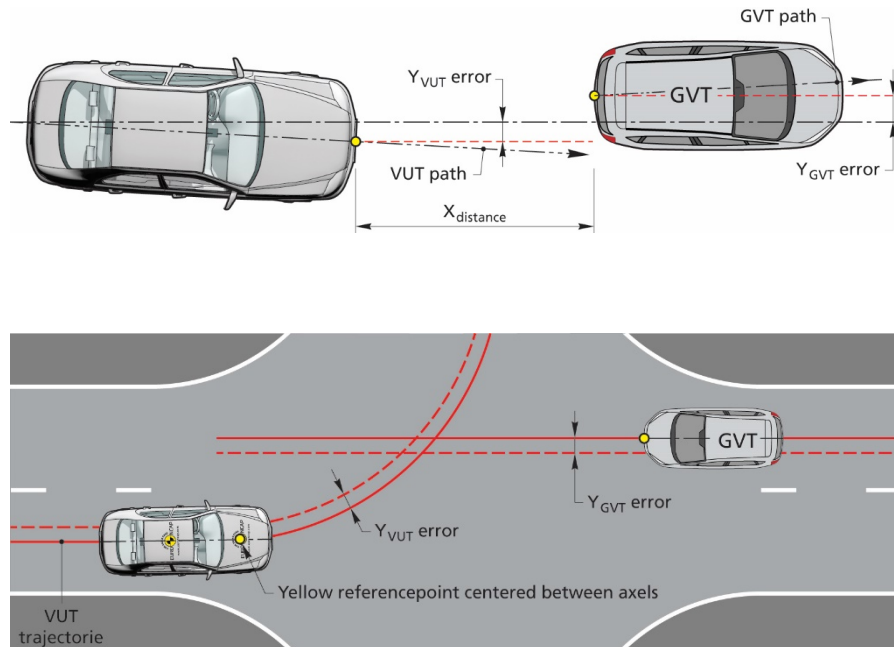


Figure 3-2: Lateral path error

### 3.3 Lateral overlap

3.3.1 The lateral overlap is defined as a percentage of the width of the VUT overlapping the GVT, where the reference line for the overlap definition is the centreline of the VUT. In case of 100% overlap, the centrelines of the VUT and GVT are aligned.

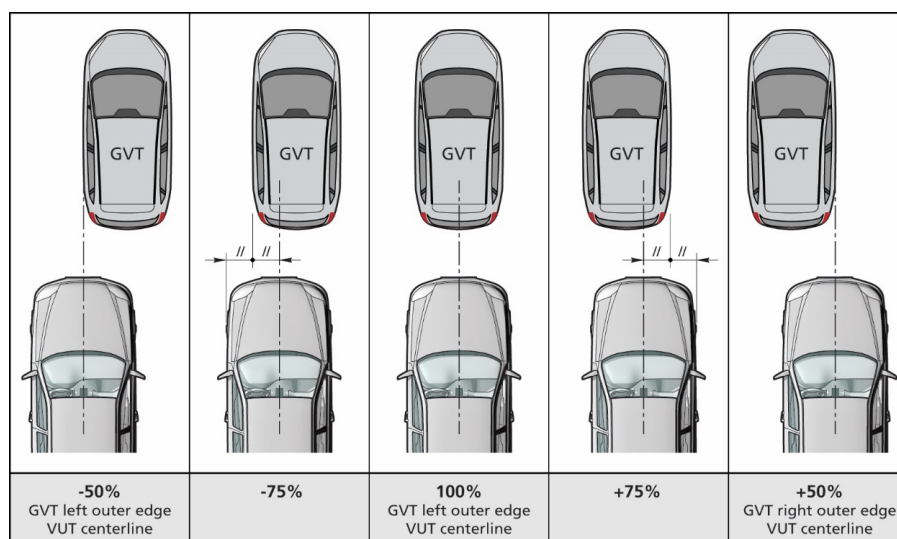


Figure 3-3: Lateral Overlap examples

## 4 MEASURING EQUIPMENT

4.1.1 Sample and record all dynamic data at a frequency of at least 100Hz. Synchronise using the DGPS time stamp the GVT data with that of the VUT.

### 4.2 Measurements and Variables

4.2.1 Time	<b>T</b>
• CCRs, CCRm and CCFtap: $T_0$ equals TTC = 4s (CCRb: $T_0$ when GVT starts decelerating)	<b><math>T_0</math></b>
• $T_{AEB}$ , time where AEB activates	<b><math>T_{AEB}</math></b>
• $T_{FCW}$ , time where FCW activates	<b><math>T_{FCW}</math></b>
• $T_{impact}$ , time where VUT impacts GVT	<b><math>T_{impact}</math></b>
• $T_{steer}$ , time where VUT enters in curve segment	<b><math>T_{steer}</math></b>
4.2.2 Position of the VUT during the entire test	<b><math>X_{VUT}, Y_{VUT}</math></b>
4.2.3 Position of the GVT during the entire test	<b><math>X_{GVT}, Y_{GVT}</math></b>
4.2.4 Speed of the VUT during the entire test	<b><math>V_{VUT}</math></b>
• $V_{impact}$ , speed when VUT impacts GVT	<b><math>V_{impact}</math></b>
• $V_{rel,impact}$ , relative speed when VUT impacts GVT	<b><math>V_{rel,impact}</math></b>
4.2.5 Speed of the GVT during the entire test	<b><math>V_{GVT}</math></b>
4.2.6 Yaw velocity of the VUT during the entire test	<b><math>\dot{\Psi}_{VUT}</math></b>
4.2.7 Yaw velocity of the GVT during the entire test	<b><math>\dot{\Psi}_{GVT}</math></b>
4.2.8 Acceleration of the VUT during the entire test	<b><math>A_{VUT}</math></b>
4.2.9 Acceleration of the GVT during the entire test	<b><math>A_{GVT}</math></b>
4.2.10 Steering wheel velocity of the VUT during the entire test	<b><math>\Omega_{VUT}</math></b>

### 4.3 Measuring Equipment

4.3.1 Equip the VUT and GVT with data measurement and acquisition equipment to sample and record data with an accuracy of at least:

- VUT and GVT speed to 0.1km/h;
- VUT and GVT lateral and longitudinal position to 0.03m;
- VUT heading angle to 0.1°;
- VUT and GVT yaw rate to 0.1°/s;
- VUT and GVT longitudinal acceleration to 0.1m/s<sup>2</sup>;
- VUT steering wheel velocity to 1.0 °/s.

### 4.4 Data Filtering

4.4.1 Filter the measured data as follows:

4.4.1.1 Position and speed are not filtered and are used in their raw state.

4.4.1.2 Acceleration, yaw rate, steering wheel velocity and force are filtered with a 12-pole phase less Butterworth filter with a cut off frequency of 10Hz.



## 5 GLOBAL VEHICLE TARGET

### 5.1 Specification

5.1.1 Conduct the tests in this protocol using the Global Vehicle Target (GVT) as shown in Figure 5-1 below. The GVT replicates the visual, radar and LIDAR attributes of a typical M<sub>1</sub> passenger vehicle.



Figure 5-1: Global Vehicle Target (GVT)

5.1.2 To ensure repeatable results the combination of the propulsion system and GVT must meet the requirements as detailed in Euro NCAP [TB025 - Global Vehicle Target specification for Euro NCAP v1.0](#).

5.1.3 The GVT is designed to work with the following types of sensors:

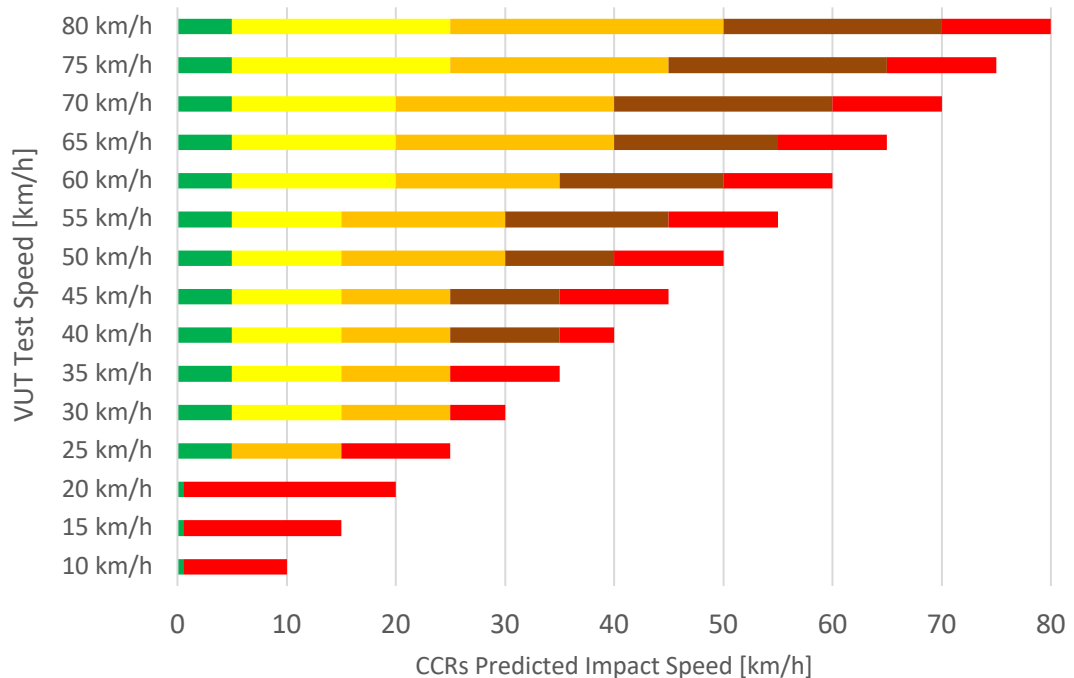
- Radar (24 and 77 GHz)
- LIDAR
- Camera

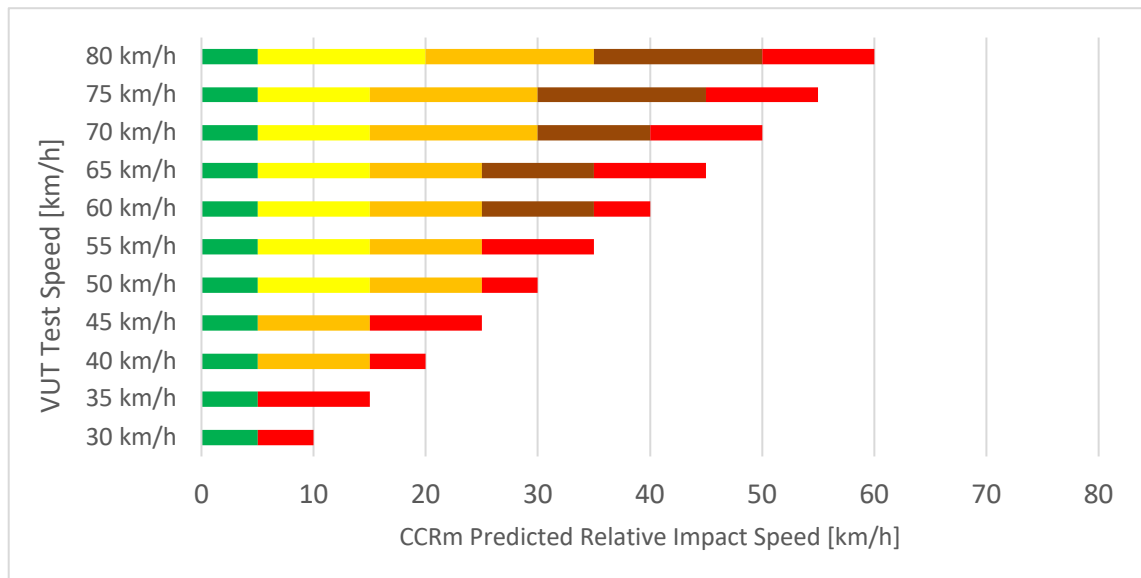
When a manufacturer believes that the GVT is not suitable for another type of sensor system used by the VUT but not listed above, the manufacturer is asked to contact the ANCAP Secretariat.

## 6 MANUFACTURER DATA

### 6.1 Manufacturer Supplied Data

- 6.1.1 The vehicle manufacturer is required to provide the ANCAP Secretariat with colour data (expected impact speeds are not required) detailing the performance of the vehicle in the CCRs and CCRm scenarios for all overlap and impact speed combinations. The prediction is to be done for both AEB and FCW system tests where applicable.
- 6.1.2 All data must be supplied by the manufacturer before any testing begins, preferably with delivery of the test vehicle(s).
- 6.1.3 Data shall be provided for each grid point according to the following colour scheme for CCRs (10-50km/h for AEB and 30-80km/h for FCW) and CCRm (30-80km/h for both AEB and FCW):





## 6.2 Absence of Manufacturer Data

6.2.1 Where predicted data is NOT provided by the vehicle manufacturer, ALL grid points are to be tested by the ANCAP laboratory, taking into account symmetry.

6.2.2 A system can consist of a combined AEB and FCW function or separate AEB or FCW functions. For combined systems, both sections 6.2.2.1 and 6.2.2.2 apply. Where the functions are separate, section 6.2.2.1 applies to the AEB function and 6.2.2.2 applies to the FCW.

6.2.2.1 For AEB CCR systems tests, when there is complete avoidance, the subsequent test speed for the next test is incremented with 10km/h. When there is contact, first perform a test at a test speed 5km/h less than the test speed where contact occurred. After this test continue to perform the remainder of the tests with speed increments of 5km/h by repeating section 8.3.1 to 8.4.3. Stop testing when the speed reduction seen in the test is less than 5 km/h.

6.2.2.2 For FCW system tests, when there is complete avoidance, the subsequent test speed for the next test is incremented by 10km/h. When there is contact, first perform a test at a test speed 5km/h less than the test speed where contact occurred. After this test continue to perform the remainder of the tests with speed increments of 5km/h by repeating section 8.3.1 to 8.4.3. In the AEB CCRm and CCRb scenarios, only perform tests at the test speeds where there was no avoidance in the AEB function tests, where applicable. Stop testing when the speed reduction seen in the test is less than 5 km/h or the relative impact speed is more than 50 km/h.

## 7 TEST CONDITIONS

### 7.1 Test Track

- 7.1.1 Conduct tests on a dry (no visible moisture on the surface), uniform, solid-paved surface with a consistent slope between level and 1%. The test surface shall have a minimal peak braking coefficient (PBC) of 0.9.
- 7.1.2 The surface must be paved and may not contain irregularities (e.g. large dips or cracks, manhole covers or reflective studs) that may give rise to abnormal sensor measurements within a lateral distance of 3.0m to either side of the test path and with a longitudinal distance of 30m ahead of the VUT when the test ends.
- 7.1.3 The presence of lane markings is allowed for CCR tests. However, testing may only be conducted in an area where typical road markings depicting a driving lane may not be parallel to the test path within 3.0m either side. Lines or markings may cross the test path, but may not be present in the area where AEB activation and/or braking after FCW is expected.

#### 7.1.4 Junction and Lane Markings

- 7.1.4.1 The CCFtap tests described in this document requires the use of a junction. The main approach lane where the VUT and GVT paths start, (horizontal lanes in Figure 7-1) will have a width of 3.5m. The side lane (vertical lanes in Figure 7-1) will have a width of 3.25 to 3.5m. The lane markings on these lanes need to conform to one of the lane markings as defined in UNECE Regulation 130:
1. Dashed line starting at the same point where the radius transitions into a straight line with a width between 0.10 and 0.15m
  2. Solid line with a width between 0.10 and 0.25m
  3. Junction without any central markings

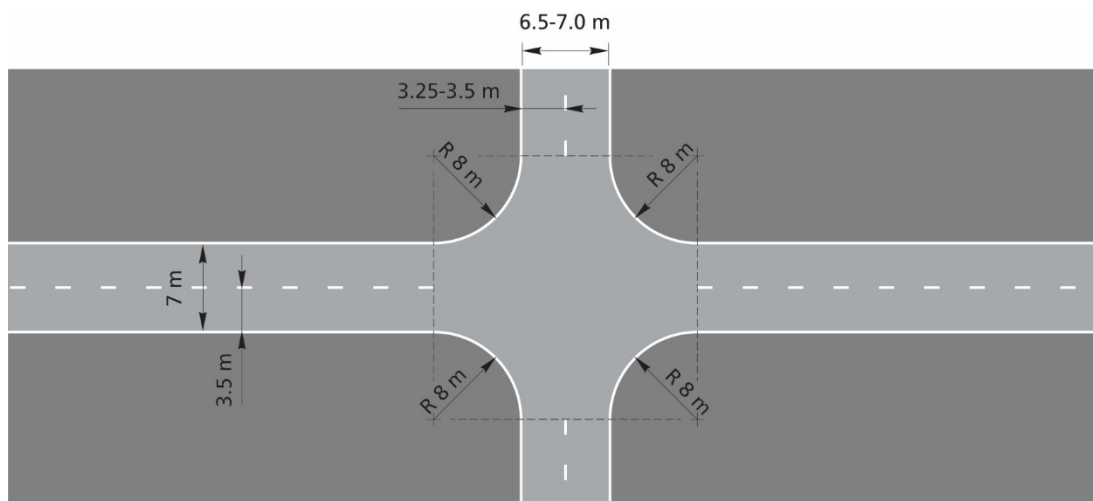


Figure 7-1: Layout of junction and the connecting lanes

## 7.2 Weather Conditions

- 7.2.1 Conduct tests in dry conditions with ambient temperature above 5°C and below 40°C.
- 7.2.2 No precipitation shall be falling and horizontal visibility at ground level shall be greater than 1km. Wind speeds shall be below 10m/s to minimise GVT and VUT disturbance.
- 7.2.3 Natural ambient illumination must be homogenous in the test area and in excess of 2000 lux for daylight testing with no strong shadows cast across the test area other than those caused by the VUT or GVT. Ensure testing is not performed driving towards, or away from the sun when there is direct sunlight.
- 7.2.4 Measure and record the following parameters preferably at the commencement of every single test or at least every 30 minutes:
- Ambient temperature in °C;
  - Track Temperature in °C;
  - Wind speed and direction in m/s;
  - Ambient illumination in Lux.

## 7.3 Surroundings

- 7.3.1 Conduct testing such that there are no other vehicles, highway furniture, obstructions, other objects or persons protruding above the test surface that may give rise to abnormal sensor measurements within a lateral distance of 3.0m to either side of the test path and within a longitudinal distance of 30m ahead of the VUT when the test ends (Figure 7-2).
- 7.3.2 Test areas where the VUT needs to pass under overhead signs, bridges, gantries or other significant structures are not permitted. For the entire test, 3m of free surroundings is to be ensured on both sides of the test path of the VUT.

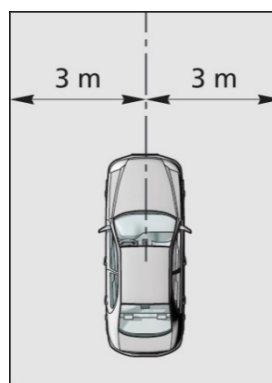


Figure 7-2: Free surroundings

7.3.3 The general view ahead and to either side of the test area shall comprise of a wholly plain man made or natural environment (e.g. further test surface, plain coloured fencing or hoardings, natural vegetation or sky etc.) and must not comprise any highly reflective surfaces or contain any vehicle-like silhouettes that may give rise to abnormal sensor measurements.

## 7.4 VUT Preparation

### 7.4.1 AEB and FCW System Settings

7.4.1.1 Set any driver configurable elements of the AEB and/or FCW system (e.g. the timing of the collision warning or the braking application if present) to the middle setting or midpoint and then next latest setting similar to the examples shown in Figure 7-3.

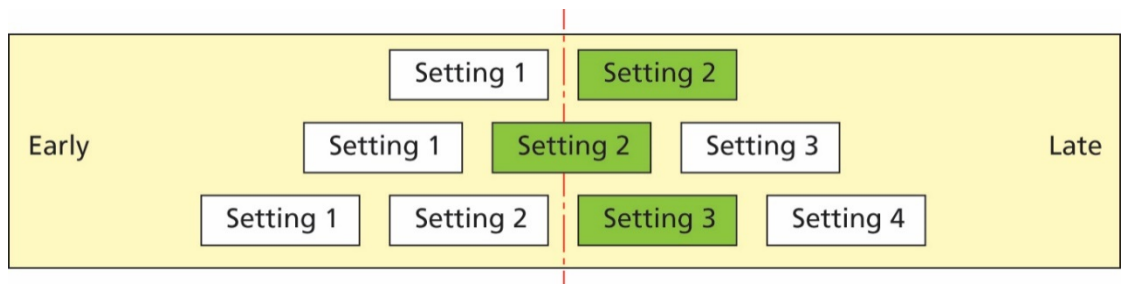


Figure 7-3: AEB and/or FCW system setting for testing

### 7.4.2 Deployable Pedestrian/VRU Protection Systems

When the vehicle is equipped with a deployable pedestrian/VRU protection system, this system shall be deactivated before the testing commences.

### 7.4.3 Tyres

Perform the testing with new original fitment tyres of the make, model, size, speed and load rating as specified by the vehicle manufacturer. It is permitted to change the tyres which are supplied by the manufacturer or acquired at an official dealer representing the manufacturer if those tyres are identical make, model, size, speed and load rating to the original fitment. Inflate the tyres to the vehicle manufacturer's recommended cold tyre inflation pressure(s). Use inflation pressures corresponding to least loading normal condition.

Run-in tyres according to the tyre conditioning procedure specified in 8.1.3. After running-in maintain the run-in tyres in the same position on the vehicle for the duration of the testing.

### 7.4.4 Wheel Alignment Measurement

The vehicle should be subject to a vehicle (in-line) geometry check to record the wheel alignment set by the OEM. This should be done with the vehicle in kerb weight.

### 7.4.5 Unladen Kerb Mass

7.4.5.1 Fill up the tank with fuel to at least 90% of the tank's capacity of fuel.

- 7.4.5.2 Check the oil level and top up to its maximum level if necessary. Similarly, top up the levels of all other fluids to their maximum levels if necessary.
- 7.4.5.3 Ensure that the vehicle has its spare wheel on board, if fitted, along with any tools supplied with the vehicle. Nothing else should be in the car.
- 7.4.5.4 Ensure that all tyres are inflated according to the manufacturer's instructions for the appropriate loading condition.
- 7.4.5.5 Measure the front and rear axle masses and determine the total mass of the vehicle. The total mass is the 'unladen kerb mass' of the vehicle. Record this mass in the test details.
- 7.4.5.6 Calculate the required ballast mass, by subtracting the mass of the test driver and test equipment from the required 200 kg interior load.

#### 7.4.6 Vehicle Preparation

- 7.4.6.1 Fit the on-board test equipment and instrumentation in the vehicle. Also fit any associated cables, cabling boxes and power sources.
- 7.4.6.2 Place weights with a mass of the ballast mass. Any items added should be securely attached to the car.
- 7.4.6.3 With the driver in the vehicle, weigh the front and rear axle loads of the vehicle.
- 7.4.6.4 Compare these loads with the "unladen kerb mass"
- 7.4.6.5 The total vehicle mass shall be within  $\pm 1\%$  of the sum of the unladen kerb mass, plus 200kg. The front/rear axle load distribution needs to be within 5% of the front/rear axle load distribution of the original unladen kerb mass plus full fuel load. If the vehicle differs from the requirements given in this paragraph, items may be removed or added to the vehicle which has no influence on its performance. Any items added to increase the vehicle mass should be securely attached to the car.
- 7.4.6.6 Repeat paragraphs 7.4.6.3 and 7.4.6.4 until the front and rear axle loads and the total vehicle mass are within the limits set in paragraph 7.4.6.5. Care needs to be taken when adding or removing weight in order to approximate the original vehicle inertial properties as close as possible. Record the final axle loads in the test details. Record the axle weights of the VUT in the 'as tested' condition.

## 8 TEST PROCEDURE

### 8.1 VUT Pre-test Conditioning

#### 8.1.1 General

8.1.1.1 A new car is used as delivered to the test laboratory.

8.1.1.2 If requested by the vehicle manufacturer, drive a maximum of 100km on a mixture of urban and rural roads with other traffic and roadside furniture to 'calibrate' the sensor system. Avoid harsh acceleration and braking.

#### 8.1.2 Brakes

8.1.2.1 Condition the vehicle's brakes in the following manner, if it has not been done before or in case the lab has not performed a 100km of driving:

- Perform twenty stops from a speed of 56km/h with an average deceleration of approximately 0.5 to 0.6g.
- Immediately following the series of 56km/h stops, perform three additional stops from a speed of 72km/h, each time applying sufficient force to the pedal to operate the vehicle's antilock braking system (ABS) for the majority of each stop.
- Immediately following the series of 72km/h stops, drive the vehicle at a speed of approximately 72km/h for five minutes to cool the brakes.

#### 8.1.3 Tyres

8.1.3.1 Condition the vehicle's tyres in the following manner to remove the mould sheen, if this has not been done before for another test or in case the lab has not performed a 100km of driving:

- Drive around a circle of 30m in diameter at a speed sufficient to generate a lateral acceleration of approximately 0.5 to 0.6g for three clockwise laps followed by three anticlockwise laps.
- Immediately following the circular driving, drive four passes at 56km/h, performing ten cycles of a sinusoidal steering input in each pass at a frequency of 1Hz and amplitude sufficient to generate a peak lateral acceleration of approximately 0.5 to 0.6g.
- Make the steering wheel amplitude of the final cycle of the final pass double that of the previous inputs.

8.1.3.2 In case of instability in the sinusoidal driving, reduce the amplitude of the steering input to an appropriately safe level and continue the four passes.



### 8.1.4 AEB/FCW System Check

8.1.4.1 Before any testing begins, perform a maximum of ten runs at the lowest test speed the system is supposed to work, to ensure proper functioning of the system.

## 8.2 Test Scenarios

8.2.1 The performance of the AEB system is assessed in the CCRs, CCRm, CCRb and CCftap scenarios as shown in the sections 8.2.3, 8.2.4, 8.2.5 and 8.2.6.

For AEB CCR, the assessment is based on a GRID prediction provided by the OEM. The actual scenarios to be tested to verify the prediction will be chosen randomly, distributed in line with the predicted colour distribution (excluding red points).

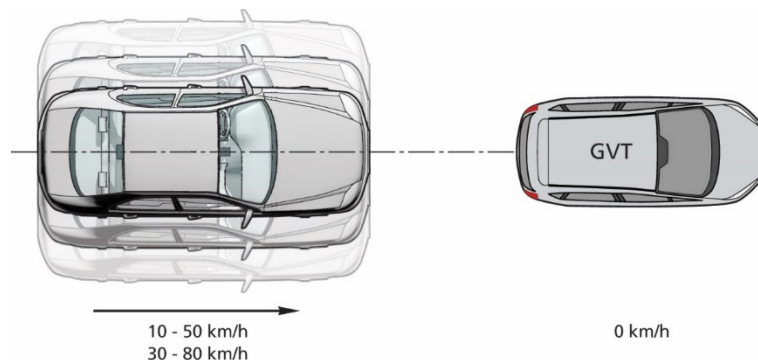
The vehicle sponsor will fund 20 verification tests, where applicable. For AEB 10 tests (CCR and CCRm) and 10 tests for FCW (CCR and CCRm).

The vehicle manufacturer has the option of sponsoring up to 10 additional verification tests for AEB CCR and 10 for FCW.

8.2.2 For testing purposes, assume a straight-line path equivalent to the centreline of the lane in which the collision occurred, hereby known as the test path. Control the VUT with driver inputs or using alternative control systems that can modulate the vehicle controls as necessary to perform the tests.

### 8.2.3 Car-to-Car Rear stationary

The CCRs scenario is a combination of speed and overlap with 5km/h incremental steps in speed and 25% in overlap within the ranges as shown in the tables below.



**Figure 8-1: CCR<sub>s</sub> scenario**

	AEB + FCW combined		AEB only	FCW only
	AEB	FCW		
<b>AEB CCR<sub>s</sub></b>	10-50 km/h -50%-50%	30-80 km/h -50%-50%	10-80 km/h -50%-50%	30-80 km/h -50%-50%

ESS tests will only be allowed for the -50% overlap situation (in case of LHD).

### 8.2.4 Car-to-Car Rear moving

The CCRm scenario is a combination of speed and overlap with 5km/h incremental steps in speed and 25% in overlap within the ranges as shown in the tables below.

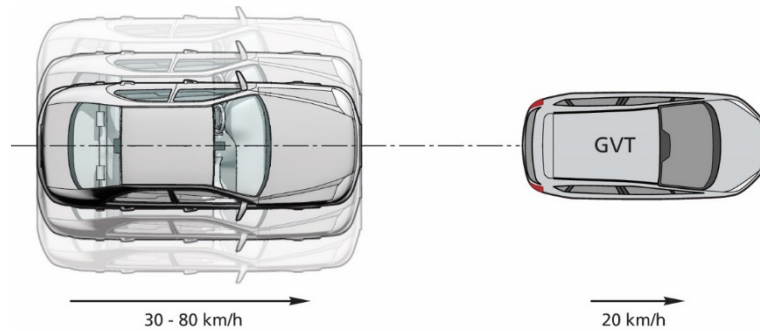


Figure 8-2: CCRm scenario

	AEB + FCW combined		AEB only	FCW only
	AEB	FCW		
<b>AEB CCRm</b>	30-80 km/h -50%-50%	50-80 km/h -50%-50%	30-80 km/h -50%-50%	50-80 km/h -50%-50%

### 8.2.5 Car-to-Car Rear braking

The CCRb tests will be performed at a fixed speed of 50km/h for both VUT and GVT with all combinations of -2 and -6m/s<sup>2</sup> acceleration and 12 and 40m headway. Different overlap situations may be tested for monitoring purpose at the end of the test program.

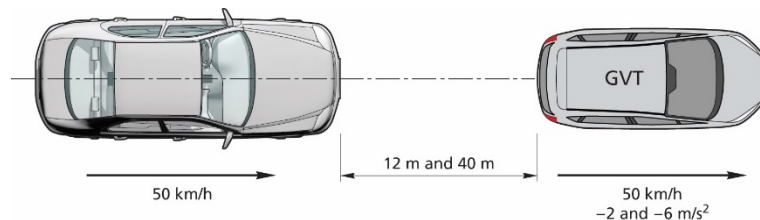


Figure 8-3: CCRb scenario

		AEB+FCW combined, AEB only & FCW only	
		-2 m/s <sup>2</sup>	-6 m/s <sup>2</sup>
<b>AEB CCRb</b>	<b>12m</b>	50 km/h	50 km/h
	<b>40m</b>	50 km/h	50 km/h

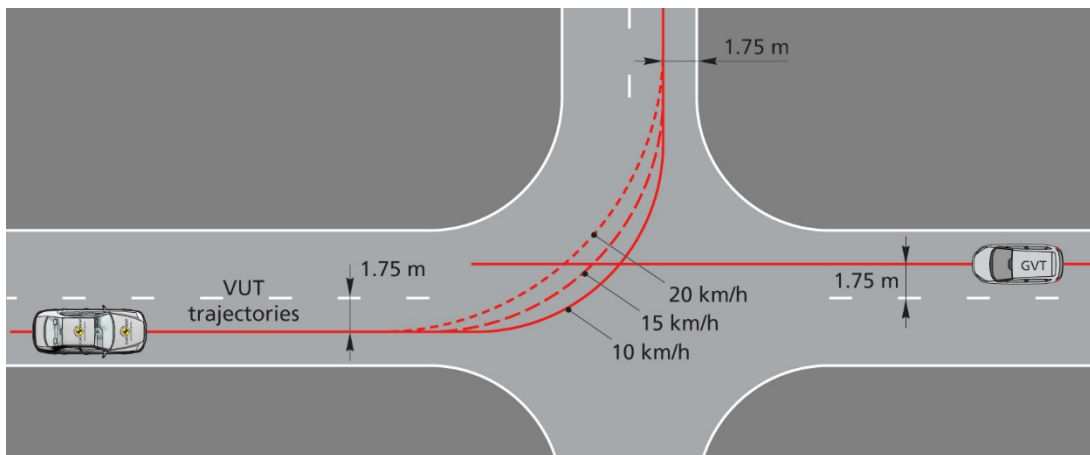
The desired deceleration of the GVT shall be reached within 1.0 seconds (T<sub>0</sub> + 1.0s) which after the GVT shall remain within ± 0.5 km/h of the reference speed profile, derived from the desired deceleration, until the vehicle speed equals 1 km/h.

### 8.2.6 Car-to-Car Front turn-across-path

8.2.6.1 For the CCftap scenario, for the VUT assume an initial straight-line path

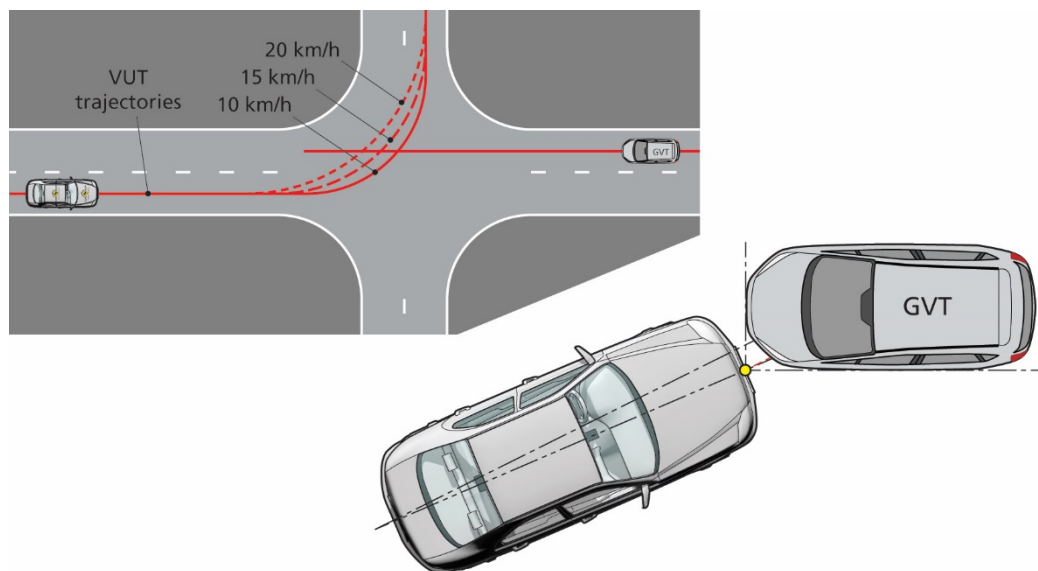
followed by a turn (clothoid, fixed radius and clothoid as specified in section 8.2.6.5), followed again by a straight line, hereby known as the test path.

8.2.6.2 The GVT will follow a straight-line path in the lane adjacent to the VUT's initial position, in the opposite direction to the VUT. The straight-line path of the VUT and GVT will be 1.75m from the centre of the centre dashed lane marking of the VUT lane.



**Figure 8-4: CCFtap scenario VUT and GVT paths**

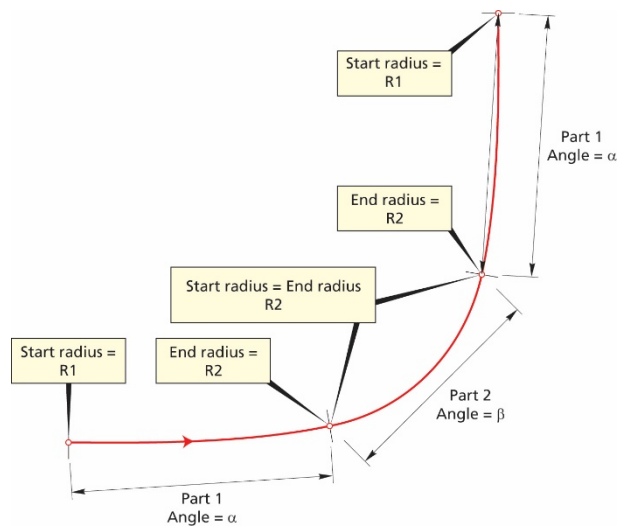
8.2.6.3 The paths of the VUT and target vehicle will be synchronised so that the front edges of the vehicle meet with a lateral position that gives a 50% overlap (assuming no system reaction) of the width of the VUT.



**Figure 8-5: CCFtap scenario paths and impact definition**

8.2.6.4 The CCFtap scenarios are all combinations of VUT speeds of 10, 15 and 20 km/h combined with GVT speeds of 30, 45 and 55 km/h.

8.2.6.5 The following parameters should be used to create the test paths where the turn signal is applied at 1.0s before  $T_{steer}$ :



Test speed	Part 1 (clothoid)			Part 2 (constant radius)			Part 3 (clothoid)		
	Start Radius R1 [m]	End Radius R2 [m]	Angle $\alpha$ [deg]	Start Radius R2 [m]	End Radius R2 [m]	Angle $\beta$ [deg]	Start Radius R2 [m]	End Radius R1 [m]	Angle $\alpha$ [deg]
10 km/h	1500	9.00	20.62	9.00	9.00	48.76	9.00	1500	20.62
15 km/h	1500	11.75	20.93	11.75	11.75	48.14	11.75	1500	20.93
20 km/h	1500	14.75	21.79	14.75	14.75	46.42	14.75	1500	21.79

Figure 8-6: CCFtap scenario paths definition

### 8.3 Test Conduct

- 8.3.1 Before every test run, drive the VUT around a circle of maximum diameter 30m at a speed less than 10km/h for one clockwise lap followed by one anticlockwise lap, and then manoeuvre the VUT into position on the test path. If requested by the OEM a simple initialisation run may be included before every test run. Bring the VUT to a halt and push the brake pedal through the full extent of travel and release.
- 8.3.2 For vehicles with an automatic transmission select D. For vehicles with a manual transmission select the highest gear where the RPM will be at least 1500 at the test speed. If fitted, a speed limiting device or cruise control may be used to maintain the VUT speed (not ACC), unless the vehicle manufacturer shows that there are interferences of these devices with the AEB system in the VUT. Apply only minor steering inputs as necessary to maintain the VUT tracking along the test path.
- 8.3.3 Perform the first test a minimum of 90s and a maximum of 10 minutes after completing the tyre conditioning (if applicable), and subsequent tests after the same time period. If the time between consecutive tests exceeds 10 minutes perform three brake stops from 72 km/h at approximately 0.3g.

Between tests, manoeuvre the VUT at a maximum speed of 50km/h and avoid riding the brake pedal and harsh acceleration, braking or turning unless strictly

necessary to maintain a safe testing environment.

## 8.4 Test Execution

8.4.1 Accelerate the VUT and GVT (if applicable) to the respective test speeds.

8.4.2 The test shall start at  $T_0$  (4s TTC) and is valid when all boundary conditions are met between  $T_0$  and  $T_{AEB}$  and/or  $T_{FCW}$ , or any other system intervention:

- Speed of VUT (GPS-speed) Test speed + 1.0 km/h
- Speed of GVT (GPS-speed) Test speed  $\pm$  1.0 km/h
- Lateral deviation from test path for VUT
  - CCR  $0 \pm 0.05$  m
  - CCftap (initial straight-line path)  $0 \pm 0.05$  m
  - (turn)  $0 \pm [0.10]$  m
- Lateral deviation from test path for GVT  $0 \pm [0.10]$  m
- Relative distance VUT and GVT (CCRb) 12m or 40m  $\pm$  0.5m
- Yaw velocity of VUT (CCR)  $0 \pm 1.0$  °/s
- Yaw velocity of GVT  $0 \pm [1.0]$  °/s
- Steering wheel velocity  $0 \pm 15.0$  °/s

8.4.3 The end of a test is considered when one of the following occurs:

- $V_{VUT} = 0$ km/h
- $V_{VUT} < V_{GVT}$  for CCR
- Contact between VUT and GVT

8.4.4 To avoid contact in the CCftap scenario, the test laboratory may include an automated braking action by the robot in case the AEB system fails to intervene (sufficiently). This braking action is applied automatically when:

- The VUT reaches the latest position at which maximum braking applied to the vehicle will prevent the VUT entering the path of the vehicle and no intervention from the AEB system is detected.
- Lateral separation between the VUT and GVT reaches  $\leq 0$  during / after AEB intervention.

It is at the labs discretion to select and use one of the options above to ensure a safe testing environment.

8.4.5 For manual or automatic accelerator control, it needs to be assured that during automatic brake the accelerator pedal does not result in an override of the system.

8.4.6 The FCW system tests should be performed using a braking robot reacting to the warning with a delay time of 1.2 seconds as per A.4 to account for driver reaction time.

8.4.7 Braking will be applied that results in a maximum brake level of  $-4 \text{ m/s}^2$  -  $0.50 \text{ m/s}^2$  when applied in a non-threat situation. The particular brake profile to be

applied (pedal application rate applied in 200ms (max. 400mm/s) and pedal force) shall be specified by the manufacturer. When the brake profile provided by the manufacturer results in a higher brake level than allowed, the iteration steps as described in ANNEX A will be applied to scale the brake level to  $-4 \text{ m/s}^2 - 0.50 \text{ m/s}^2$ .

- 8.4.8 When no brake profile is provided, the default brake profile as described in ANNEX A will be applied.
- 8.4.9 ESS evaluation will be performed as described in ANNEX B.

## ANNEX A BRAKE APPLICATION PROCEDURE

The braking input characterisation test determines the brake pedal displacement and force necessary to achieve a vehicle deceleration typical of that produced by a typical real-world driver in emergency situations.

### A.1 Definitions

$T_{\text{BRAKE}}$  - The point in time where the brake pedal displacement exceeds 5mm.

$T_{-6\text{m/s}^2}$  - The point in time is defined as the first data point where filtered, zeroed and corrected longitudinal acceleration data is less than  $-6\text{m/s}^2$ .

$T_{-2\text{m/s}^2}$ ,  $T_{-4\text{m/s}^2}$  - similar to  $T_{-6\text{m/s}^2}$ .

### A.2 Measurements

Measurements and filters to be applied as described in Chapter 4 of this protocol.

### A.3 Brake Characterization Procedure

First perform the brake and tyre conditioning tests as described in 8.1.2 and 8.1.3. The brake input characterisation tests shall be undertaken within 10 minutes after conditioning the brakes and tyres.

#### A.3.1 Brake Displacement Characterisation Tests

- Push the brake pedal through the full extent of travel and release.
- Accelerate the VUT to a speed in excess of 85km/h. Vehicles with an automatic transmission will be driven in D. For vehicles with a manual transmission select the highest gear where the RPM will be at least 1500 at the 85km/h.
- Release the accelerator and allow the vehicle to coast. At a speed of  $80 \pm 1.0\text{km/h}$  initiate a ramp braking input with a pedal application rate of  $20 \pm 5\text{mm/s}$  and apply the brake until a longitudinal acceleration of  $-7\text{m/s}^2$  is achieved. For manual transmission vehicles, press the clutch as soon as the RPM drops below 1500. The test ends when a longitudinal acceleration of  $-7\text{m/s}^2$  is achieved.
- Measure the pedal displacement and applied force normal to the direction of travel of the initial stroke of the brake pedal, or as close as possible to normal as can be repeatedly achieved.

A.3.1.1 Perform three consecutive test runs. A minimum time of 90 seconds and a maximum time of 10 minutes shall be allowed between consecutive tests. If the maximum time of 10 minutes is exceeded, perform three brake stops from 72 km/h at approximately 0.3g.

- Using second order curve fit and the least squares method between  $T_{-2\text{m/s}^2}$ ,  $T_{-6\text{m/s}^2}$ , calculate the pedal travel value corresponding to a longitudinal acceleration of  $-4 \text{ m/s}^2$  (=D4, unit is m). Use data of at least

three valid test runs for the curve fitting.

- This brake pedal displacement is referred to as D4 in the next chapters.
- Using second order curve fit and the least squares method between  $T_{-2m/s^2}$ ,  $T_{-6m/s^2}$ , calculate the pedal force value corresponding to a longitudinal acceleration of  $-4 \text{ m/s}^2$  ( $=F4$ , unit is N). Use data of at least three valid test runs for the curve fitting.
- This brake pedal force is referred to as F4 in the next chapters.

### A.3.2 Brake Force Confirmation and Iteration Procedure

- Accelerate the VUT to a speed of 80+1km/h. Vehicles with an automatic transmission will be driven in D. For vehicles with a manual transmission select the highest gear where the RPM will be at least 1500 at the 80km/h.
- Apply the brake force profile as specified in B.4, triggering the input manually rather than in response to the FCW. Determine the mean acceleration achieved during the window from  $T_{\text{BRAKE}} + 1\text{s}$  to  $T_{\text{BRAKE}} + 3\text{s}$ . If a mean acceleration outside the range of  $-4$ - $0.5\text{m/s}^2$  results, apply the following method to ratio the pedal force applied.

$F4_{\text{new}} = F4_{\text{original}} * (-4/\text{mean acceleration})$ , i.e. if  $F4_{\text{original}}$  results in a mean acceleration of  $-5\text{m/s}^2$ ,  $F4_{\text{new}} = F4_{\text{original}} * -4 / -5$

- Repeat the brake force profile with this newly calculated F4, determine the mean acceleration achieved and repeat the method as necessary until a mean acceleration within the range of  $-4$ - $0.5\text{m/s}^2$  is achieved.

A.3.2.1 Three valid pedal force characteristic tests (with the acceleration level being in the range as specified) are required. A minimum time of 90 seconds and a maximum time of 10 minutes shall be allowed between consecutive tests. If the maximum time of 10 minutes is exceeded, perform three brake stops from 72 km/h at approximately 0.3g.

- before restarting the brake pedal force characterisation tests. This brake pedal force is referred as F4 in the next chapters.

## A.4 Brake Application Profile

- Detect  $T_{\text{FCW}}$  during the experiment in real-time.
- Release the accelerator at  $T_{\text{FCW}} + 1 \text{ s}$ .
- Perform displacement control for the brake pedal, starting at  $T_{\text{FCW}} + 1.2 \text{ s}$  with a gradient of the lesser of  $5 \times D4$  or  $400\text{mm/s}$  (meaning the gradient to reach pedal position D4 within 200ms, but capped to a maximum application rate of  $400\text{mm/s}$ ).
- Monitor brake force during displacement control and use second-order filtering with a cut-off frequency between 20 and 100 Hz (online) as appropriate.
- Switch to force control, maintaining the force level, with a desired value of F4 when



- i. the value  $D4$  as defined in B.3 is exceeded for the first time,
  - ii. the force  $F4$  as defined in B.3 is exceeded for the first time,
- whichever is reached first.
- The point in time where position control is switched to force control is noted as  $T_{\text{switch}}$ .
  - Maintain the force within boundaries of  $F4 \pm 25\% F4$ . A stable force level should be achieved within a period of 200ms maximum after the start of force control. Additional disturbances of the force over  $\pm 25\% F4$  due to further AEB interventions are allowed, as long as they have a duration of less than 200ms.
  - The average value of the force between  $T_{\text{FCW}} + 1.4\text{s}$  and the end of the test should be in the range of  $F4 \pm 10 \text{ N}$ .

## **ANNEX B**

### **Emergency Steering Support**

The ESS is evaluated at the ANCAP lab with input from the OEM to ensure proper triggering of the system.